

Board of Commissioners

75 Langley Drive • Lawrenceville, GA 30046-6935
770.822.7000 • www.gwinnettcounty.com

Charlotte J. Nash, Chairman
Jace W. Brooks, District 1
Lynette Howard, District 2
Tommy Hunter, District 3
John Heard, District 4



Official

Informal Briefing Minutes

Tuesday, February 21, 2017 - 10:30 AM

Present: Charlotte J. Nash, Jace Brooks, Lynette Howard, Tommy Hunter, John Heard

I. Transportation

Comprehensive Transportation Plan Update

Department of Transportation Director Alan Chapman and Cristina Pastore of Kimley-Horn updated the Board on the progress of Gwinnett County's Comprehensive Transportation Plan Update. No Official Action Taken.

Destination2040

Gwinnett's Comprehensive Transportation Plan

gwinnettcounty

A map of Gwinnett County, Georgia, showing a network of roads and highways. The map is overlaid with a grid of light gray lines. The county's boundary is outlined in black. The text 'gwinnettcounty' is written in a blue, lowercase, sans-serif font across the top right of the map.

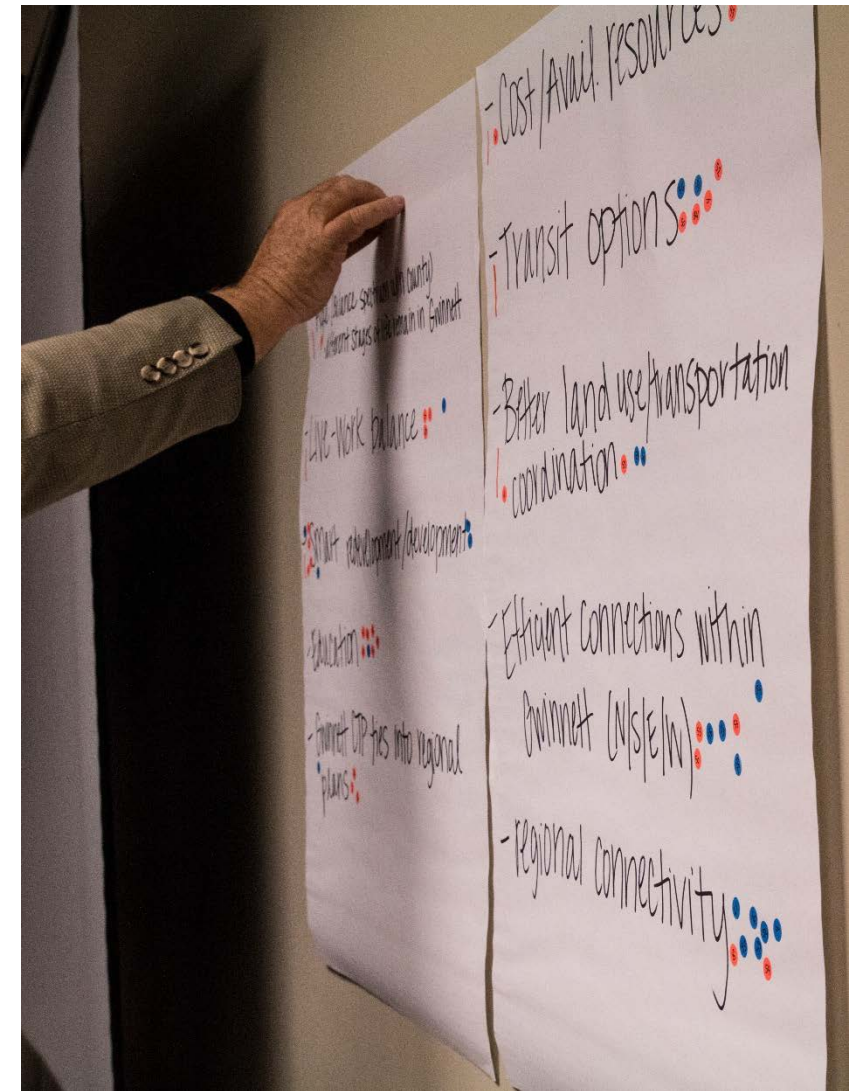
Comprehensive Transportation Plan Update

February 21, 2017

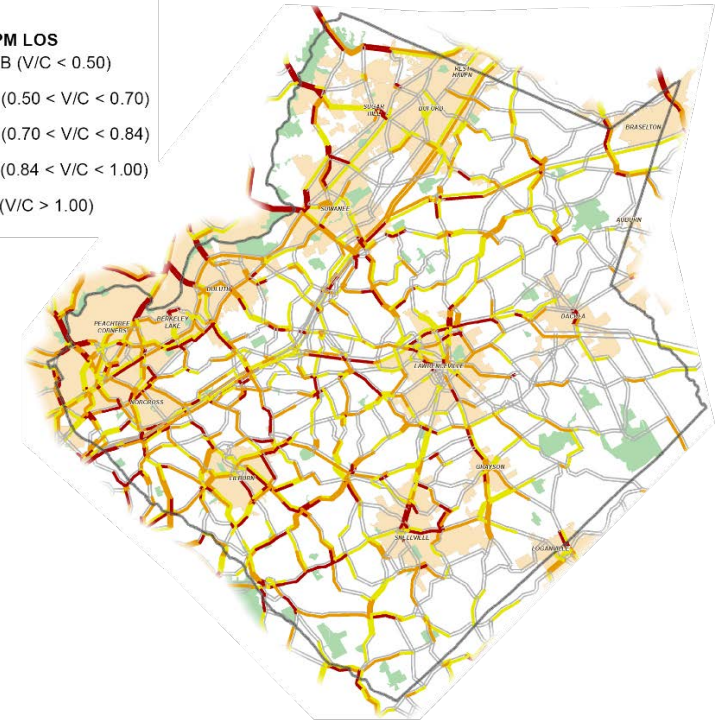
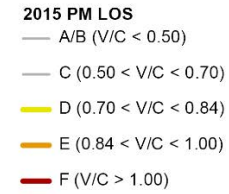
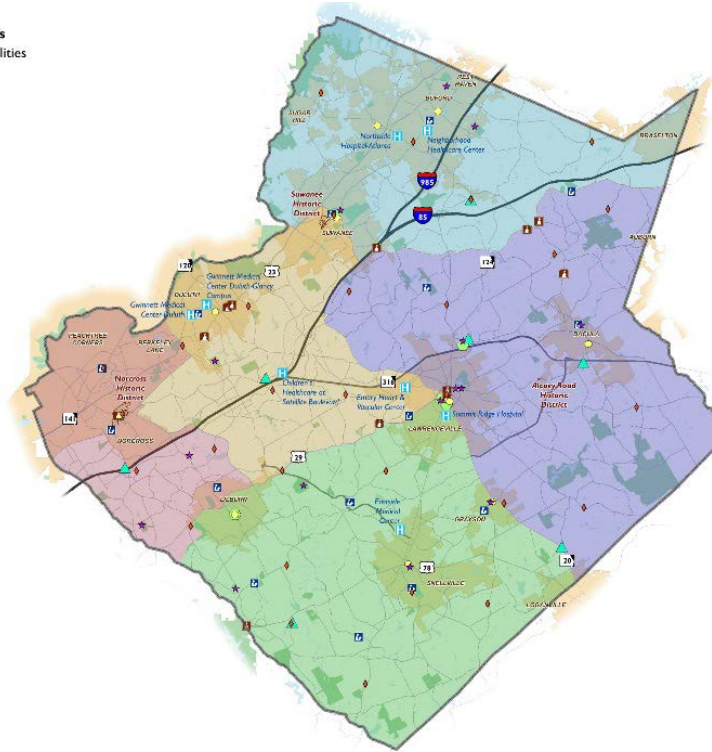
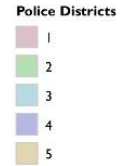
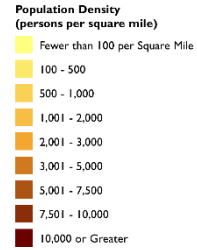
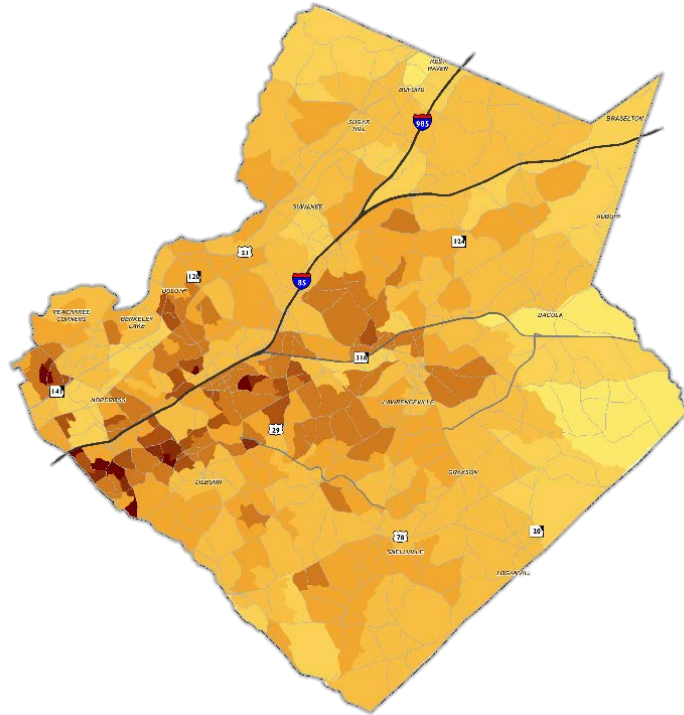
- Previous stakeholder and public meetings
- Recent accomplishments
- Public feedback on priorities
- How the plan addresses the feedback
- Next steps
- 2017 SPLOST status
- Transit Development Plan scope and status

Vision and Goals

- Improve Connectivity
- Leverage the County's Transportation System to Improve Economic Vitality and Quality of Life
- Improve Safety and Mobility for All People Across All Modes of Travel
- Proactively Embrace Future Transportation Opportunities
- Continue to Serve as Responsible Stewards of Transportation Resources



Needs Assessment



Needs Assessment

Destination2040

Gwinnett's Comprehensive Transportation Plan



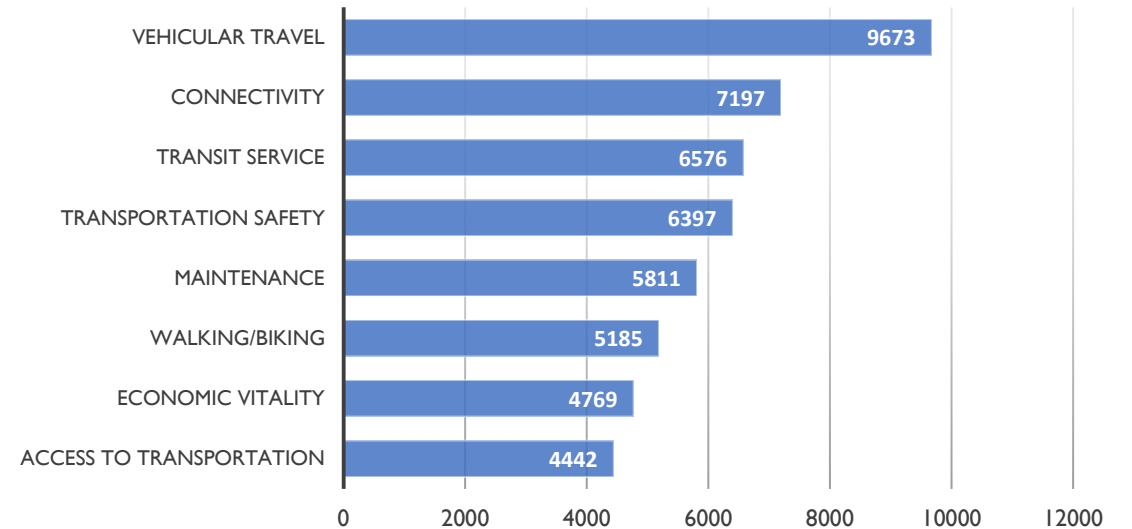
Recent Accomplishments

- Finalized Vision, Goals, and Objectives
- Completed:
 - 6 public meetings
 - 25 stakeholder interview meetings (including all cities)
 - Online survey with >5000 respondents
 - 25 community events
 - Adjacent communities meeting
- Finished establishing Existing Conditions
- Determined baseline Needs Assessment and future needs
- Developed universe of possible transportation projects

Public Feedback on Priorities

| | OVERALL | PARKS | SENIOR | EVENTS | PUBLIC MTG | METROQUEST |
|--------------------------|---------|-------|--------|--------|------------|------------|
| VEHICULAR TRAVEL | 1 | 2 | 2 | 3 | 1 | 1 |
| CONNECTIVITY | 2 | 5 | 6 | 5 | 2 | 2 |
| TRANSIT SERVICE | 3 | 6 | 3 | 6 | 3 | 3 |
| TRANSPORTATION SAFETY | 4 | 3 | 5 | 2 | 4 | 4 |
| MAINTENANCE | 5 | 1 | 4 | 4 | 5 | 5 |
| WALKING/BIKING | 6 | 4 | 7 | 1 | 7 | 7 |
| ECONOMIC VITALITY | 7 | 8 | 8 | 8 | 6 | 6 |
| ACCESS TO TRANSPORTATION | 8 | 7 | 1 | 7 | 8 | 8 |
| TOTAL RESPONSES | 4,978 | 347 | 96 | 297 | 211 | 4,028 |

Citizen Priority Rankings (Weighted)



Destination2040

Gwinnett's Comprehensive Transportation Plan

HOW THE PLAN ADDRESSES PUBLIC FEEDBACK

- Universe of projects
 - Previously developed projects
 - Needs assessment analysis
 - Stakeholder and public outreach
 - County service requests
 - County, City, and CID recommendations
 - Projects from current Citizens Project Selection Committee
- Evaluation of projects
 - Built on Vision and Goals
 - Coordinated with County SPLOST evaluation process
 - Lowest scoring projects not advanced for consideration
 - List is NOT financially constrained

Destination2040

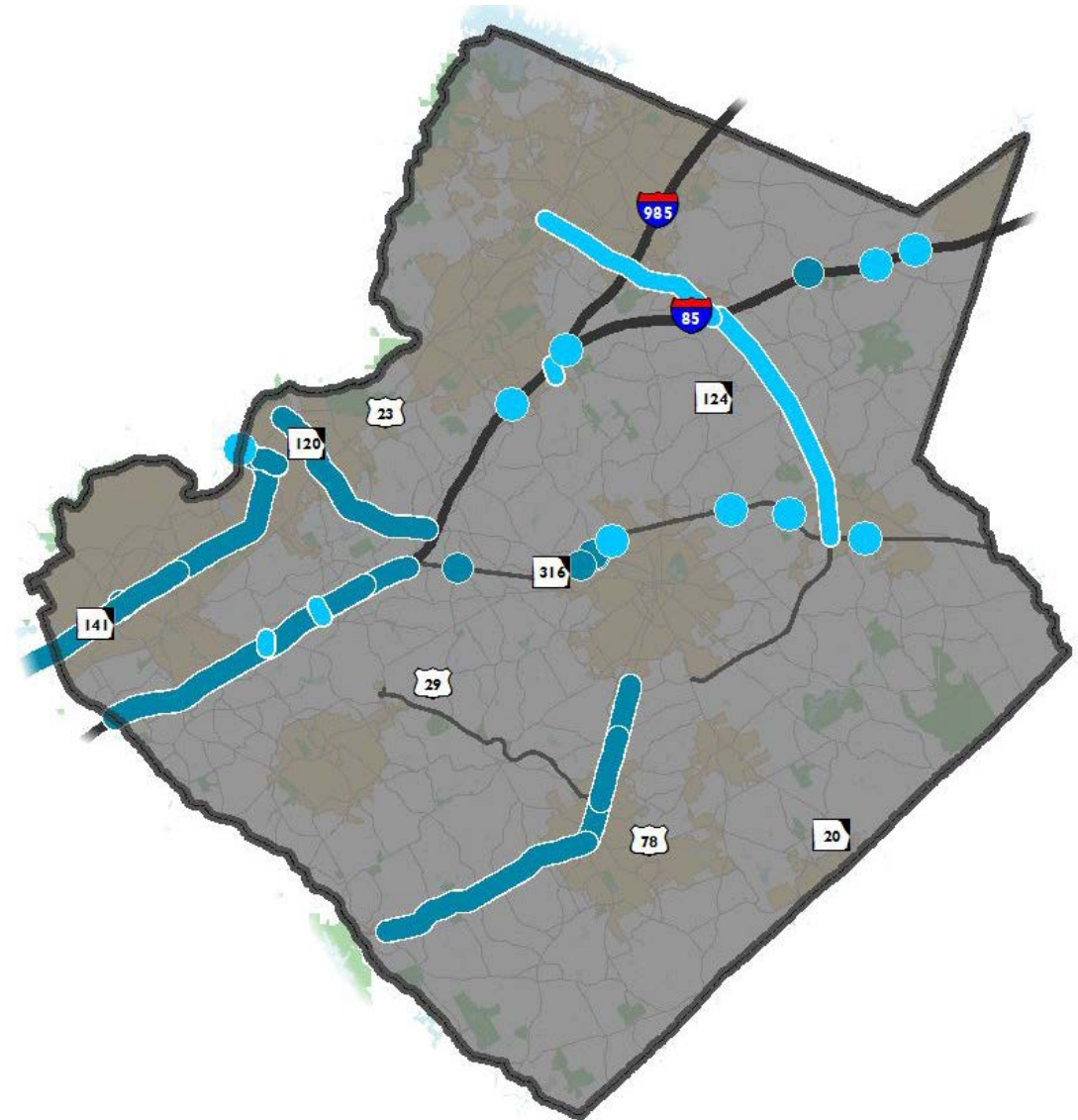
Gwinnett's Comprehensive Transportation Plan

GOAL: IMPROVE CONNECTIVITY

New and Improved Connectivity

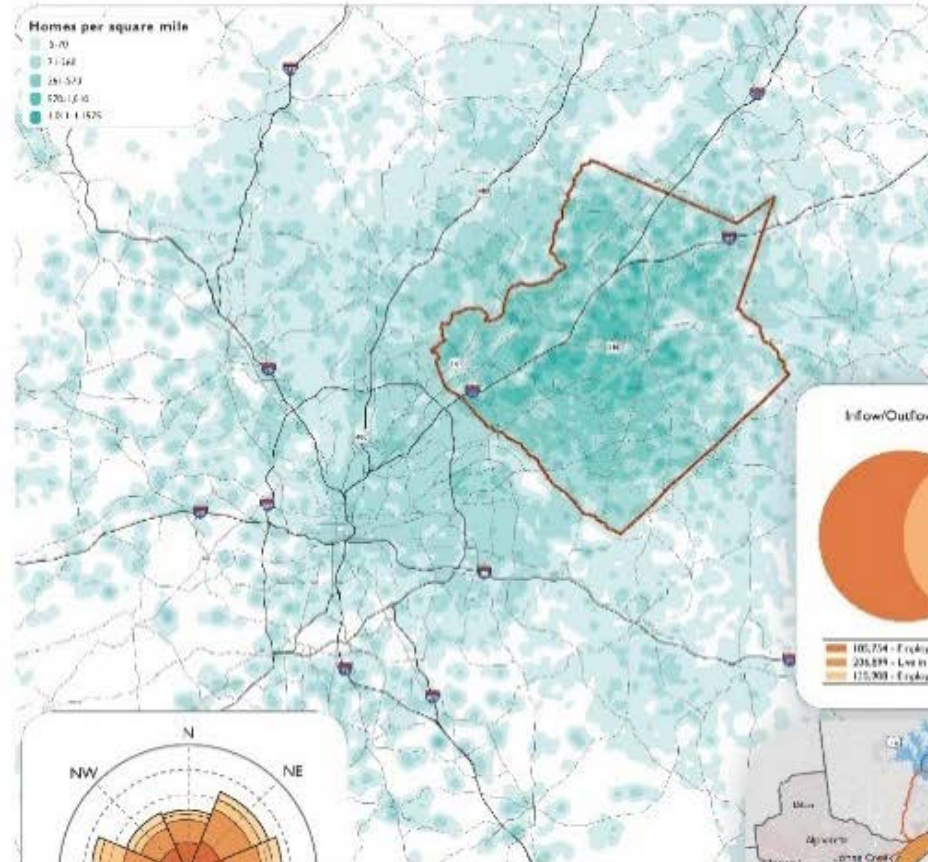
New Connections

- Capacity Improvements
- New Connections/ Interstate Crossings

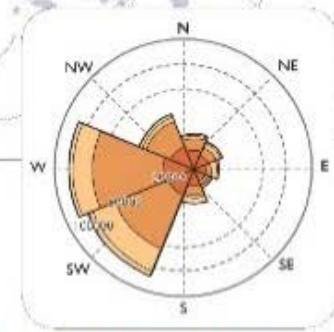
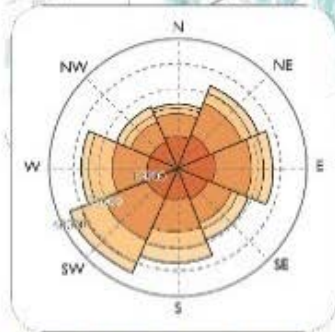
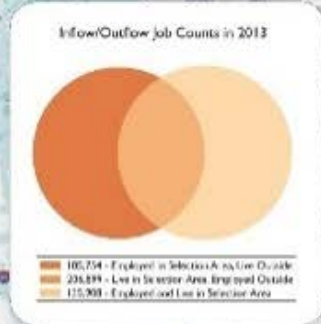
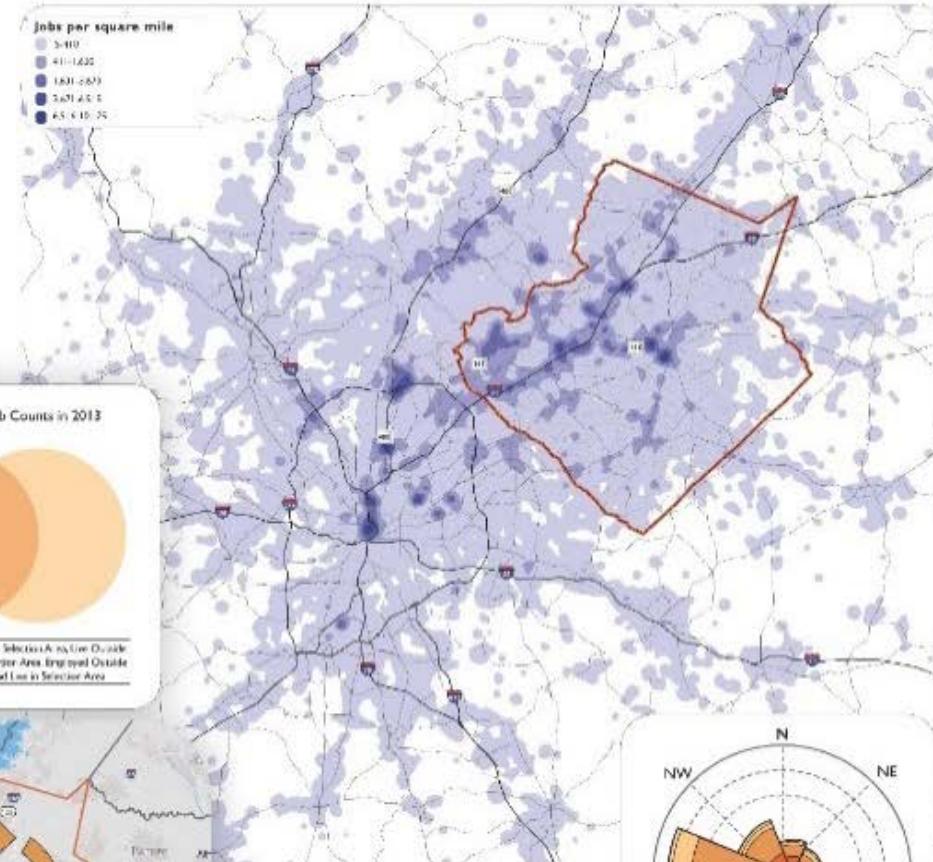


Home and Work Locations

Where Gwinnett Workers Live



Where Gwinnett Residents Work

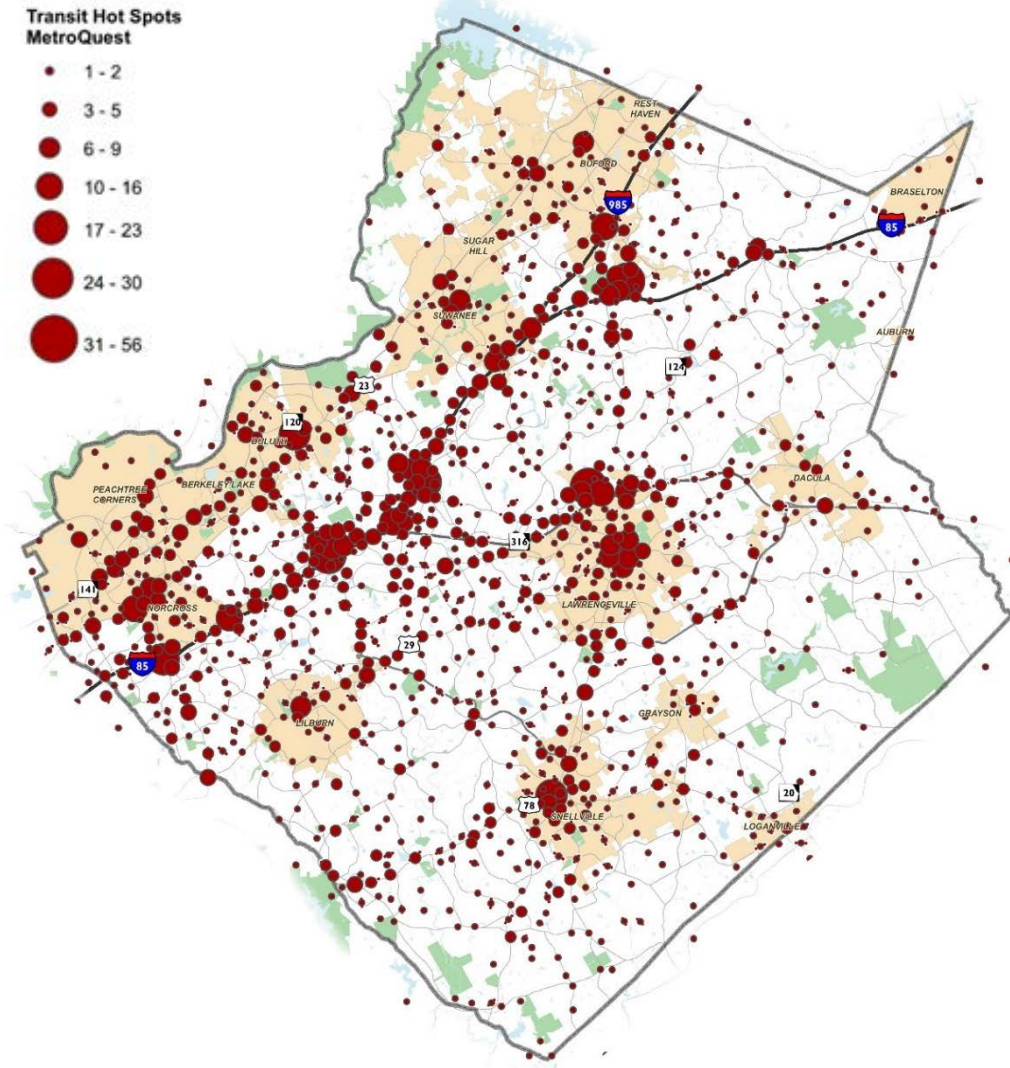


Source:
OnTheMap - U.S. Census Bureau, Center
for Economic Studies
Data based on 2002-2013 Longitudinal
Employer-Household Dynamics (LEHD)
Origin-Destination Employment Statistics
(LODES)

Short-term CTP
Recommendation:

Comprehensive Transit
Development Plan

Beginning Spring 2017



Destination2040

Gwinnett's Comprehensive Transportation Plan

**GOAL: LEVERAGE THE COUNTY'S
TRANSPORTATION SYSTEM TO
IMPROVE ECONOMIC VITALITY AND
QUALITY OF LIFE**

Economic Vitality

Economic Vitality

Projects near Industrial, Freight, R&D and Economic Development Areas

Activity Centers

Research and Development Corridors

Industrial Zoning Areas

Truck Routes

Railroads

Economic Development Asset Index

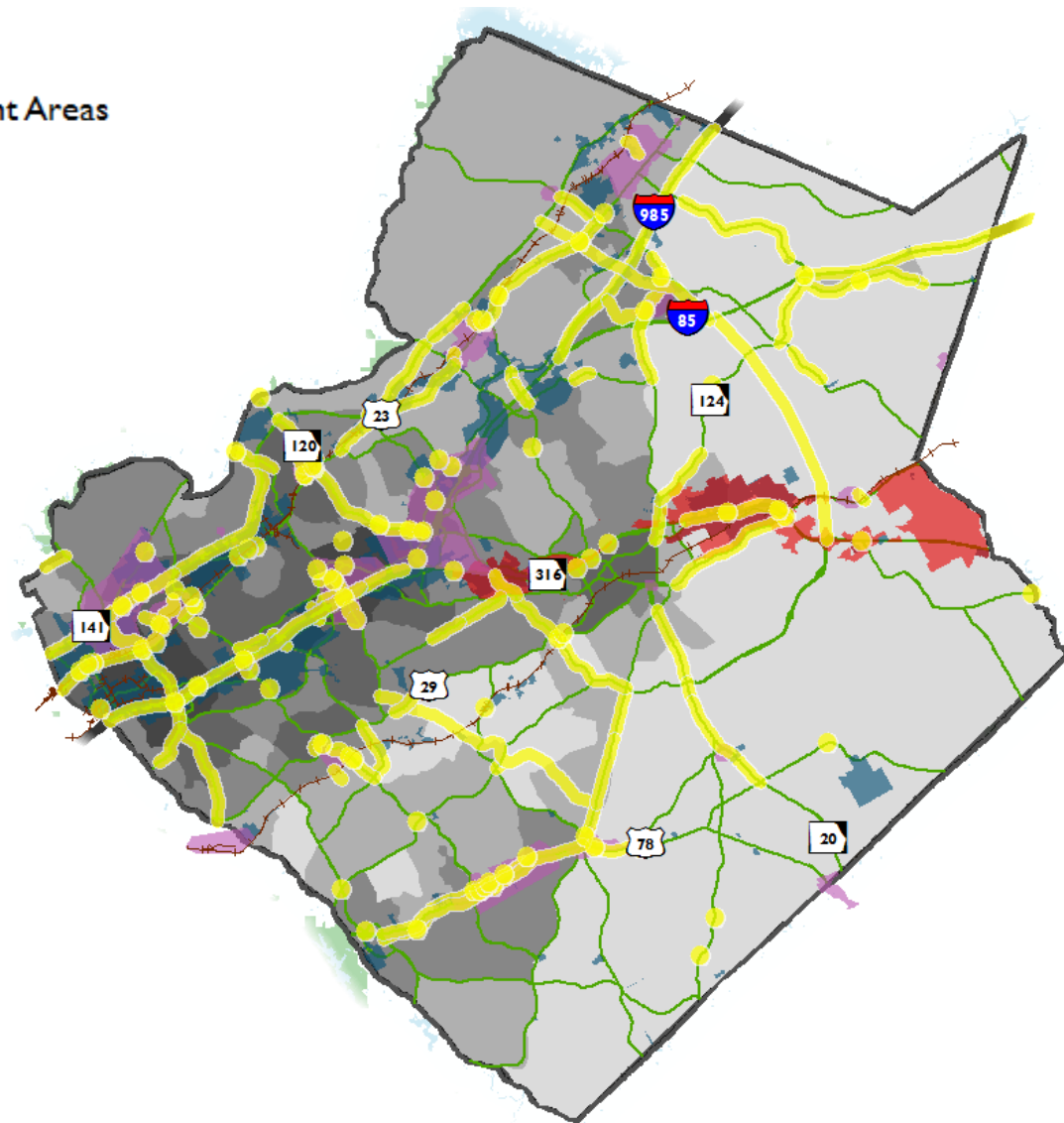
Low

Low-Mid

Mid

High-Mid

High



Quality of Life – Bicycle/Pedestrian

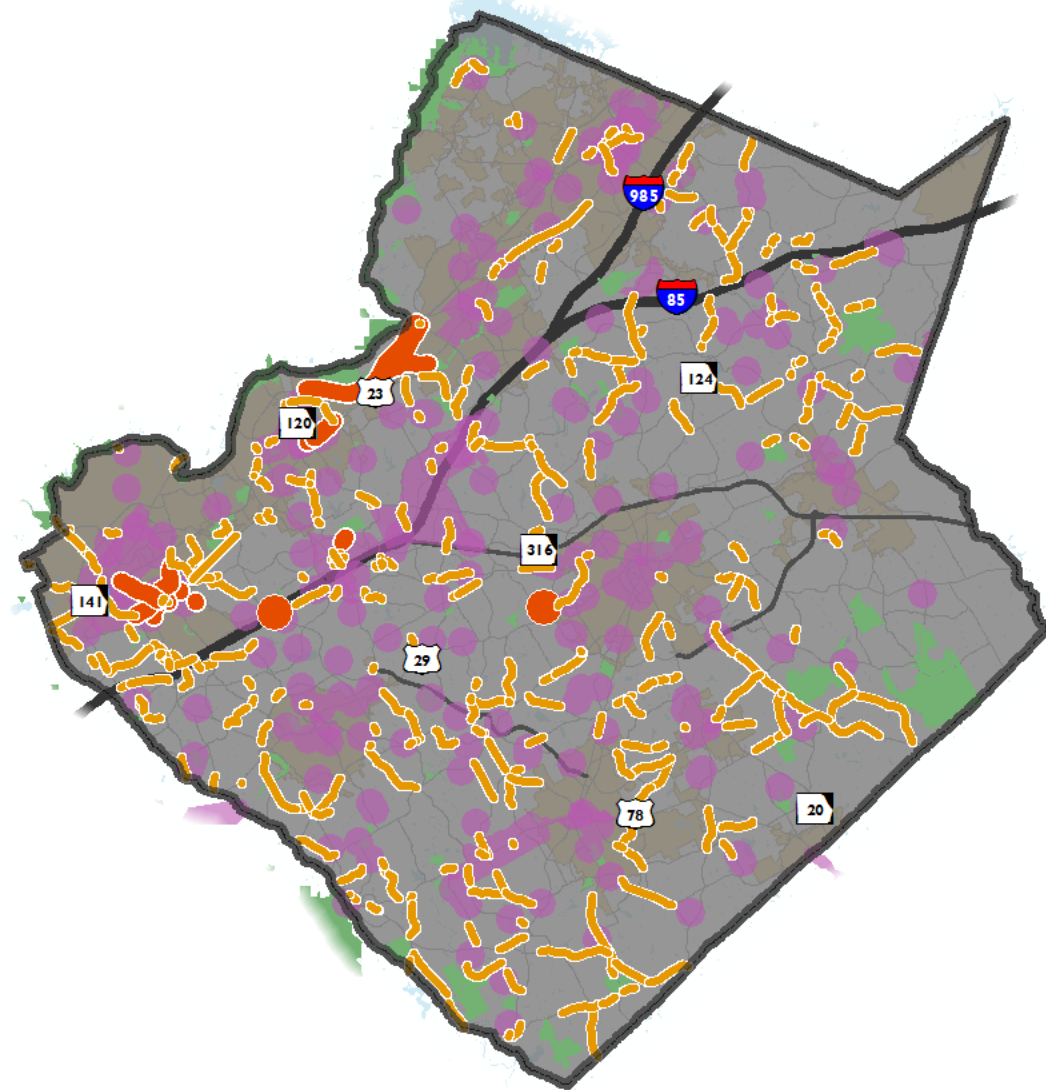
Community Livability/ Quality of Life

— Sidewalks Projects Considered for Evaluation

● Other Potential Bicycle/Pedestrian Projects

■ Activity Centers & Community Facilities

■ Parks



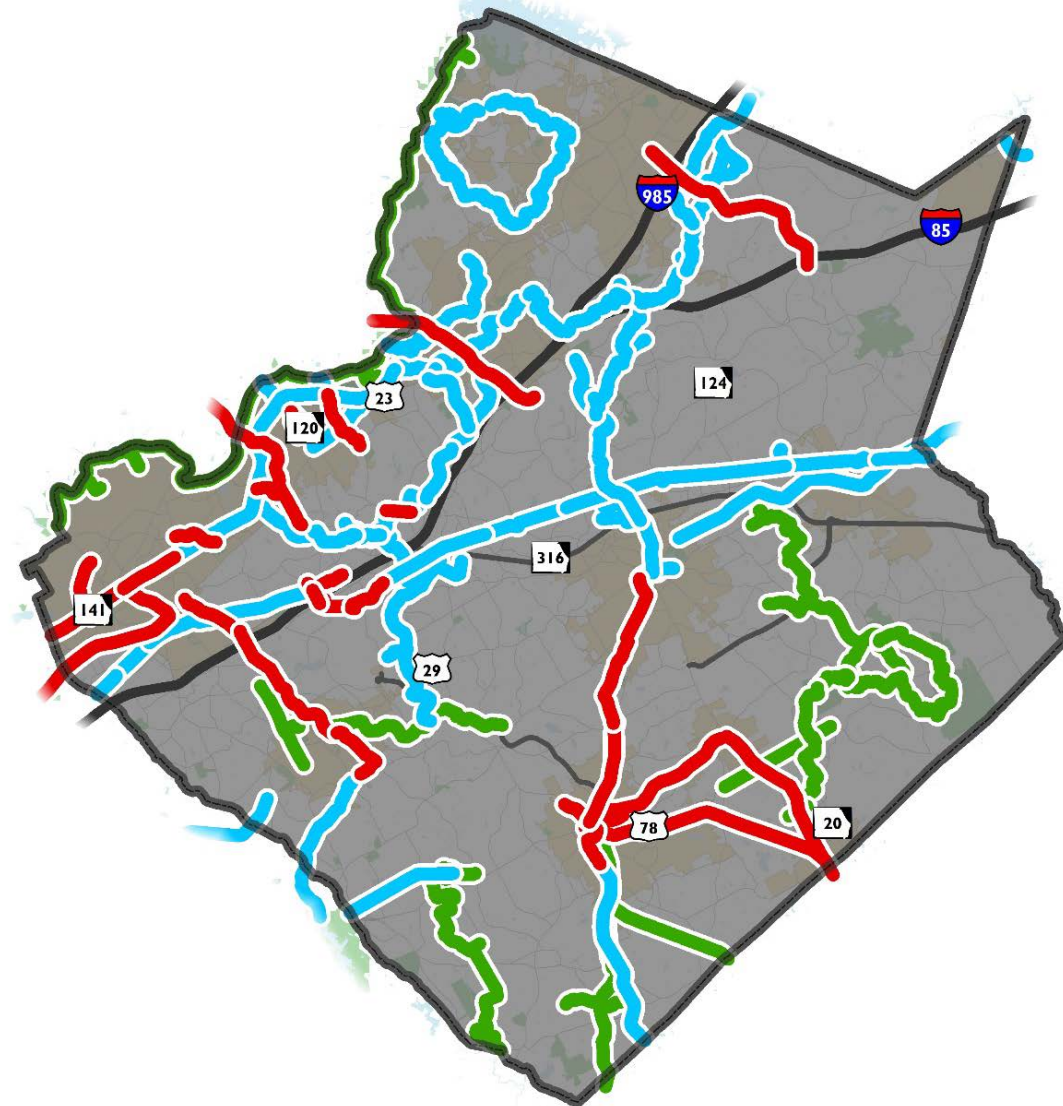
Quality of Life – Trails

Trails

- Transportation
- Hybrid
- Recreational

Countywide Trails Master Plan

Currently Underway



Gwinnett Countywide
TRAILS MASTER PLAN

Destination2040

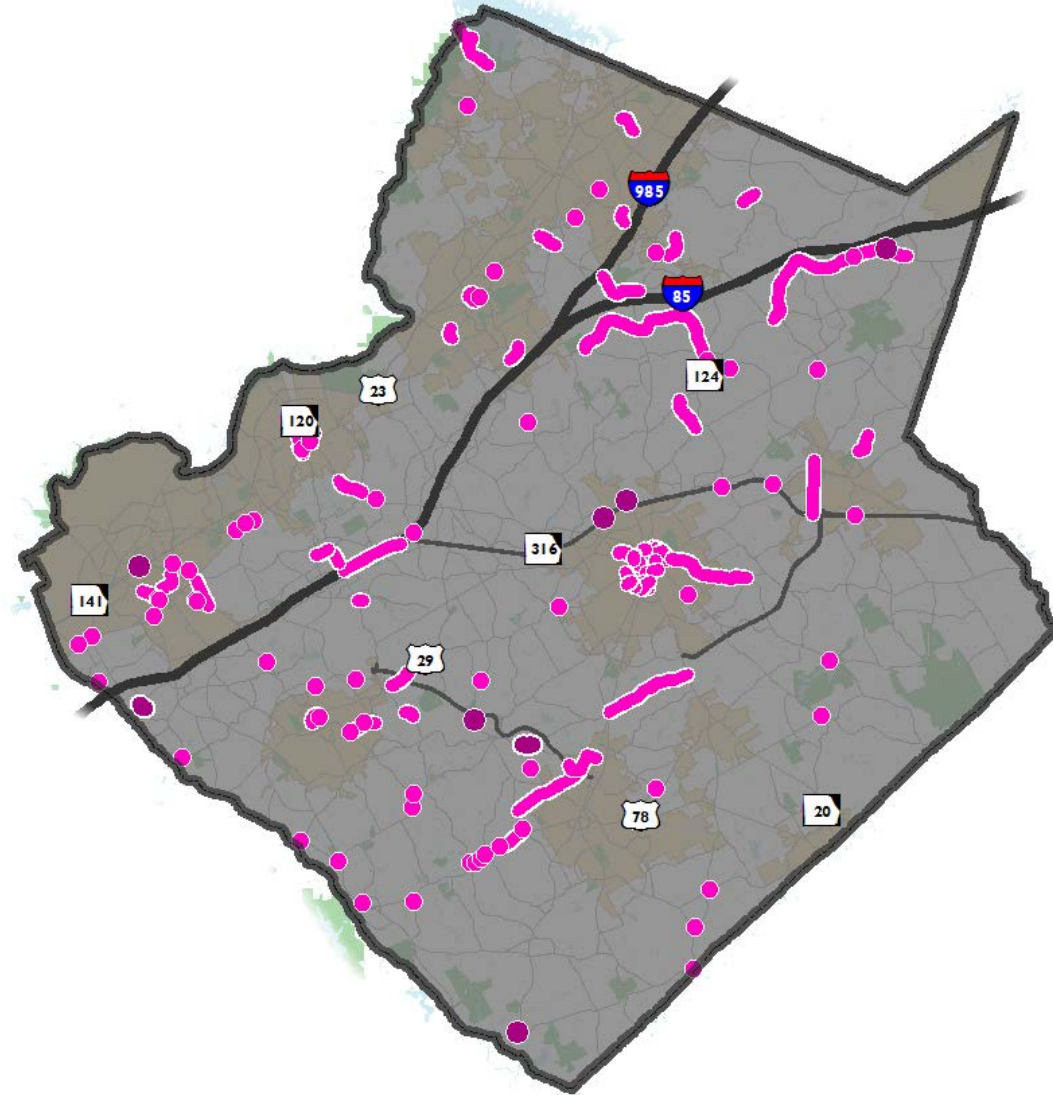
Gwinnett's Comprehensive Transportation Plan

**GOAL: IMPROVE SAFETY AND
MOBILITY FOR ALL PEOPLE
ACROSS ALL MODES OF TRAVEL**

Safety Improvement Projects

School Safety and Road Safety & Alignment Projects

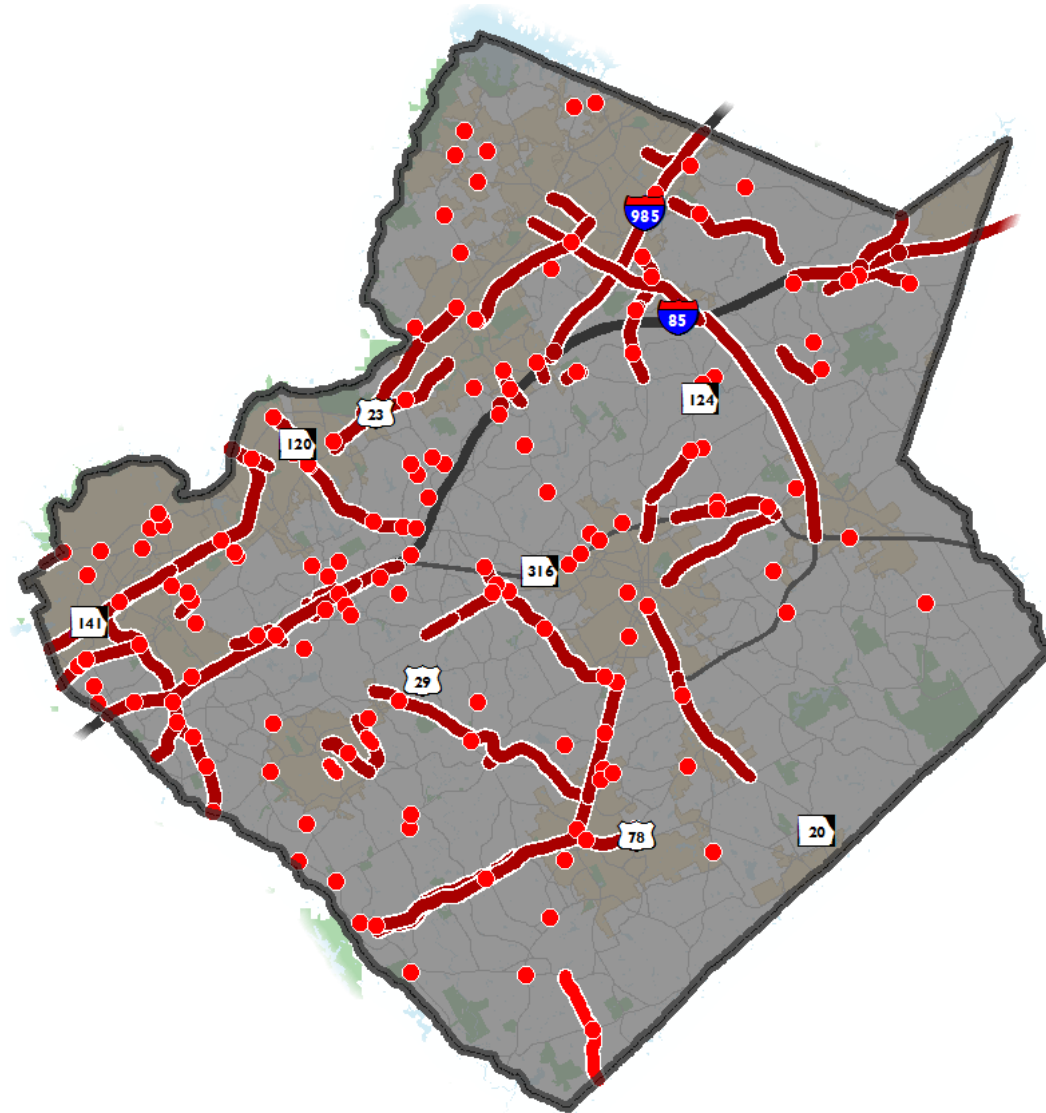
- School Safety Projects
- █ Road Safety & Alignment Projects



Mobility Improvement Projects

Major Road Improvements and Intersection Projects

- Intersection Projects
- Major Roadway Improvement Projects



Destination2040

Gwinnett's Comprehensive Transportation Plan

**GOAL: PROACTIVELY EMBRACE
FUTURE TRANSPORTATION
OPPORTUNITIES**

Improved Technology



Advanced Traffic Management System (ATMS) Plan

Currently Underway





**New Diverging Diamond Interchange Bridge
at Jimmy Carter Boulevard**

Destination2040

Gwinnett's Comprehensive Transportation Plan

**GOAL: CONTINUE TO SERVE AS
RESPONSIBLE STEWARDS OF
TRANSPORTATION RESOURCES**

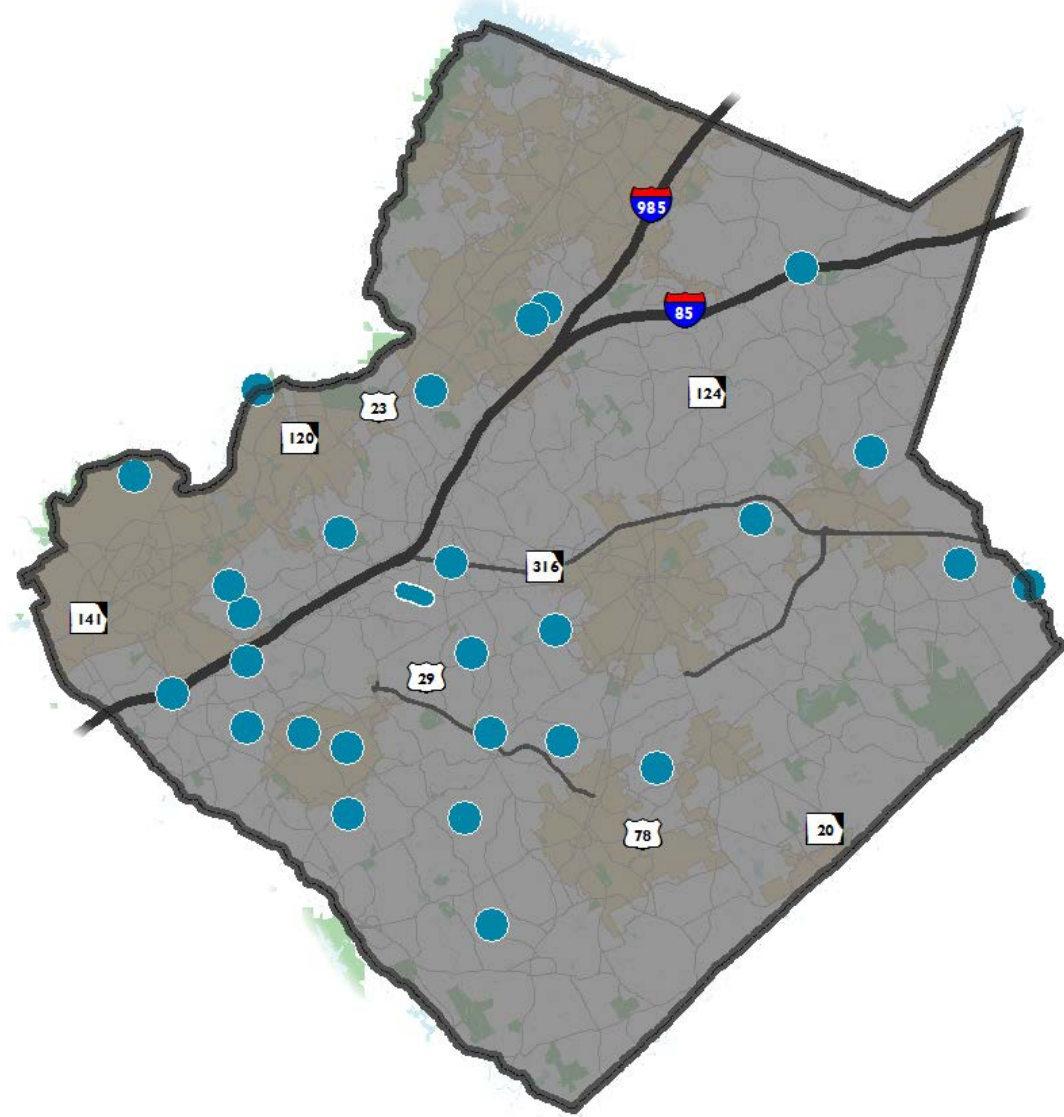
Repair/Replace Roads and Bridges

Bridge Maintenance

● Bridge Maintenance Projects

Roadway resurfacing
set-aside:

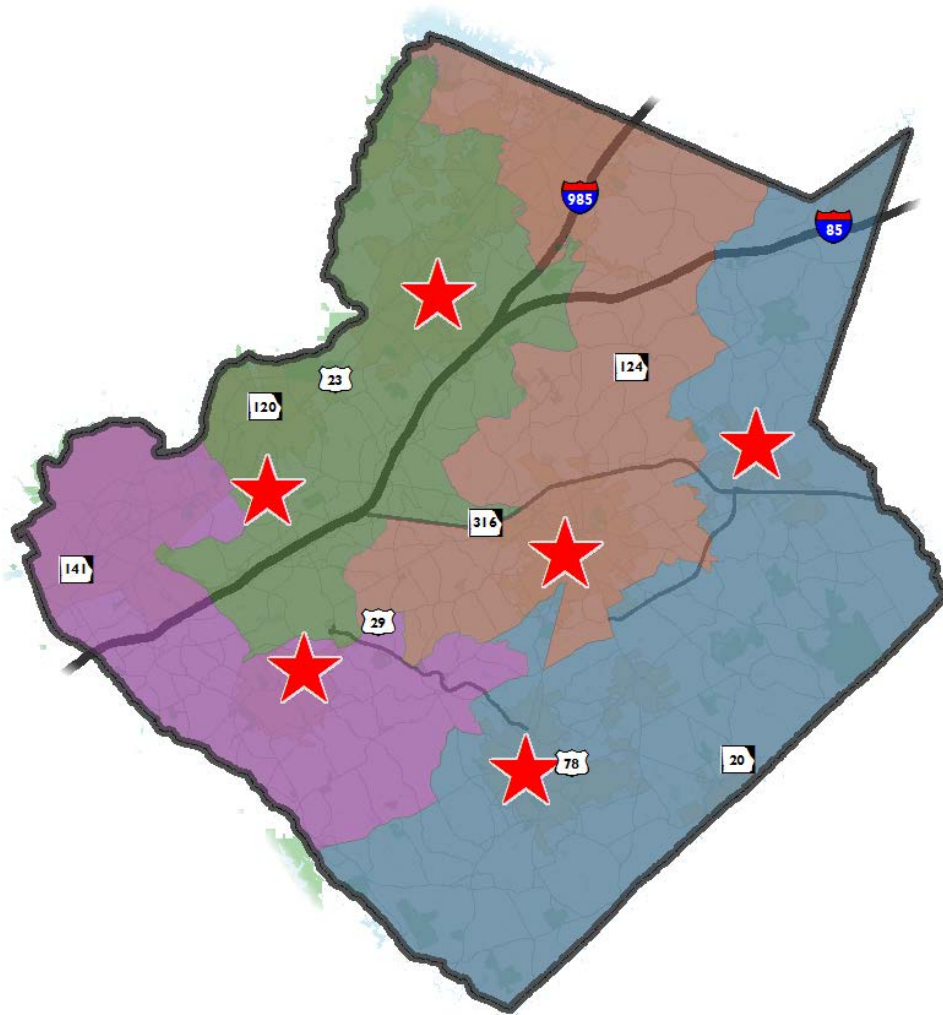
\$114 Million for 6-year SPLOST



Destination2040

Gwinnett's Comprehensive Transportation Plan

WHERE WE GO FROM HERE



Public Meetings:

- February 27, 2017 – 5:30pm to 7:30pm
Lilburn City Hall (Community Room)
- March 2, 2017 – 5:30pm to 7:30pm
Snellville City Hall (Community Room)
- March 6, 2017 – 5:30pm to 7:30pm
Gwinnett Justice & Administration Center (Conference Room C)
- March 16, 2017 – 5:30pm to 7:30pm
Dacula Park (Community Room)
- March 18, 2017 – 10:00am to noon
Shorty Howell Park (Activity Building)
- March 20, 2017 – 5:30pm to 7:30pm
George Pierce Park (Community Room)

Public Meeting Format

- Pick up a passport and public comment card
- Visit each of the stations
- Participate in activities where they exist
- Provide open comment on Transit, CTP projects, and Trails



PUBLIC MEETING
Interactive Stations


PASSPORT

WELCOME

Welcome

Gwinnett County Comprehensive Transportation Plan

Thanks for taking our second survey, which focuses on recommendations whereas the first survey focused on needs. Please take a moment to tell us what you think and what's important to you!



Destination2040
Gwinnett's Comprehensive Transportation Plan

Begin

2 BUDGET ALLOCATION

3 GWINNETT TRAILS

4 MAJOR INVESTMENTS

5 STAY INVOLVED

?

We all use the transportation system differently! It influences how we move; how goods/services reach us; how we access our jobs, schools, and activities; how communities look; and how we interact with others.

Next Steps

- Complete short range SPLOST program with CPSC
- Develop long range funding program
- Constrain long range projects into tiers
- Develop policies
- Public review and 30-day comment period

NEXT STEPS...



2017 SPLOST Status

Citizens Project Selection Committee

| | Member | Alternate |
|-------------------------|------------------|--------------------|
| Resident – District 1 | Uday Parikh | Piper Keairnes |
| Resident – District 2 | Sherry Ferguson | Sal Pirzad |
| Resident – District 3 | Chris Ford | Greg Cantrell |
| Resident – District 4 | Steven Douches | Raymond Rodden |
| Business | Laurie McClain | Darryl Franklin |
| Civic | Joy Monroe | Debra Pennington |
| Environmental | Charles McDaniel | Art Sheldon |
| Freight / Manufacturing | Chad Lockhart | Kenny King |
| Schools | Alan Kaplan | Mark Williams |
| Seniors | David Baker | Patricia Gabilondo |
| Young Professional | Sohum Mehta | Erik Provitt |



2017 SPLOST Status

2017 SPLOST Citizens Project Selection Committee



2017 SPLOST Project Categories

| Category | Tier I | Tier II |
|---|----------------------------|--------------------------|
| Bridges, Culverts and Transportation Drainage | \$46 million | \$5.3173 million |
| Capital Projects Rehabilitation and Resurfacing | \$114 million | -- |
| Intersections | \$45 million | \$11.9 million |
| Major Roads | \$118 million | \$16.3 million |
| Residential Speed Control | \$750,000 | -- |
| Road Safety and Alignment | \$30 million | \$5 million |
| School Safety | \$20 million | \$2.5 million |
| Sidewalks and Pedestrian Safety | \$30.463 million | \$7.6172 million |
| Transportation Planning | \$1.65 million | -- |
| Unpaved Roads | \$1 million | -- |
| TOTALS | \$406.863 million | \$48.6345 million |
| County / City Joint Projects | \$30.84577 million | -- |
| TOTAL | \$437.70877 million | \$48.6345 million |

2017 SPLOST CPSC Schedule

| | Presented | Committee Approval |
|---|-------------------|--------------------|
| Capital Projects Rehabilitation and Resurfacing | November 16, 2016 | December 12, 2016 |
| Residential Speed Control | November 16, 2016 | December 12, 2016 |
| Transportation Planning | November 16, 2016 | December 12, 2016 |
| Unpaved Roads | November 16, 2016 | December 12, 2016 |
| School Safety | December 12, 2016 | January 9, 2017 |
| Bridges, Culverts and Transportation Drainage | January 9, 2017 | January 24, 2017 |
| Road Safety and Alignment | January 24, 2017 | |
| Intersections | February 22, 2017 | |
| Major Roads | March 15, 2017 | |
| Sidewalks and Pedestrian Safety | April 2017 | |
| Joint County / City Projects | May 2017 | |



Gwinnett County Transit Planning

Transit Development Plan – Major Deliverables

- Systemwide service improvement recommendations
- Advanced technology solution recommendations
- Short and long range plans for the Transit System
 - Short Term – next 1 to 2 years; operational improvements
 - Medium Term – 2 to 8 years; the next level of service delivery implementation
 - Long Term – to year 2040 including the development of High Capacity Dedicated Right of Way Transit solutions



Gwinnett County Transit Planning

Transit Development Plan – Major Deliverables

- Feasibility report with estimated cost to construct and operate for a community-supported major investment
- Financial plan
 - Dedicated funding sources for transit services
 - Alternative revenue sources



Gwinnett County Transit Planning

Transit Development Plan – Status

- Advertised Request for Proposals December 2016
- Received proposals January 2017
- Currently reviewing proposals
- Contract award recommendation March/April 2017



gwinnettcounty
GOVERNMENT

**TRANSPORTATION
DEPARTMENT**

Questions